



ISTOBAL HW'COMPAK

Fleet wash specialist

ISTOBAL
Vehicle Wash & Care

ISTOBAL HW'COMPAK

Fleet wash specialist

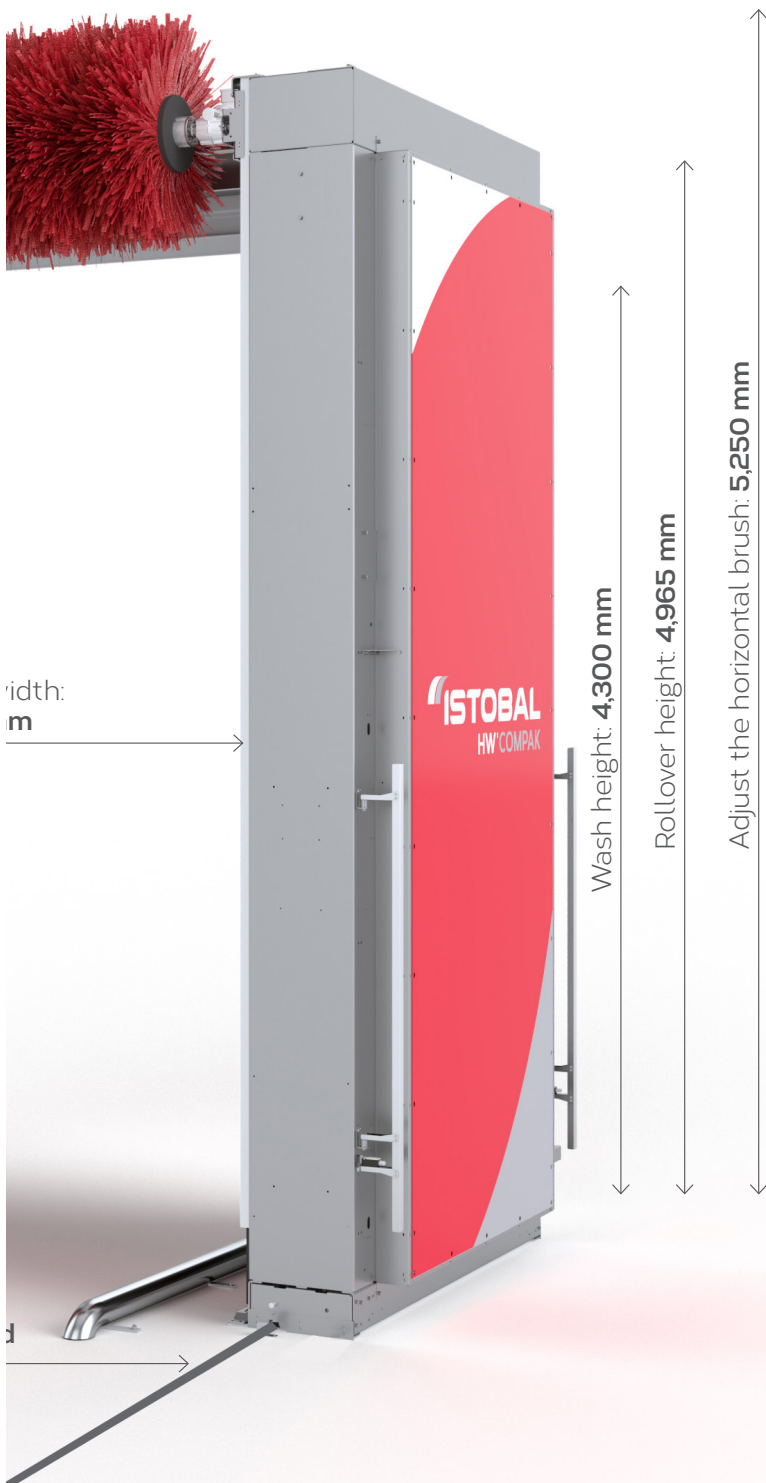
The **ISTOBAL HW 'COMPAK** model is compact, robust and highly efficient equipment for commercial vehicle washes, specially optimised for the complete washing of trucks and buses. Equipped with the latest Smartwash connectivity technology by ISTOBAL, it enables digital and automated fleet wash process management and more efficient remote maintenance, making washing easier, faster and more controlled.

The **ISTOBAL HW 'COMPAK** rollover optimises the wash time thanks to optional features specifically designed for washing trucks and buses, such as the side high-pressure system, foaming chemical spray and underchassis wash. It also allows flexible configuration of wash programmes and speeds, as well as independent control of the different solenoid valves for greater water and electricity savings. Dosing pumps also enable controlled and efficient chemical usage.

Thanks to the **ISTOBAL HW 'COMPAK** model, freight carriers, commercial vehicle washes and companies with fleets of buses have a very competitive option for efficient, fast and automated washing of trucks and buses.



Rail length	24 m	27 m	31 m
Wash length	18.75 m	21.75 m	25.75 m



ADVANTAGES

- ✓ Automatic, competitive, eco-friendly and highly efficient.
- ✓ Combined brush configuration with high side pressure in the same wash run.
- ✓ Latest wash control and automation technology
- ✓ Reduces wash time and maintenance costs.
- ✓ New vertical brush control system for uniform pressure across the entire wash height

ISTOBAL HW'COMPAK

Brushes

HORIZONTAL

The horizontal polyethylene brush cleans the front and rear of vehicles as well as the roof. It incorporates an anti-fall safety system, a frequency variable for controlling the lifting speed and a variable-speed drive for controlling the brush pressure, which ensures optimal vehicle profiling. The brush can also be used as a programme to avoid front mirrors and rear loading platforms.



VERTICAL

Vertical brushes are self-propelled and swinging, enabling double overlapping on the front and rear of vehicles. The system works with polyethylene brushes controlled by frequency converters, which allow a smooth start of the rotation and a pressure control system to adapt to different vehicle geometries, maintaining uniform pressure across the entire wash height. Both vertical and horizontal brushes have a 1100mm diameter to achieve a deep washing at all surfaces.

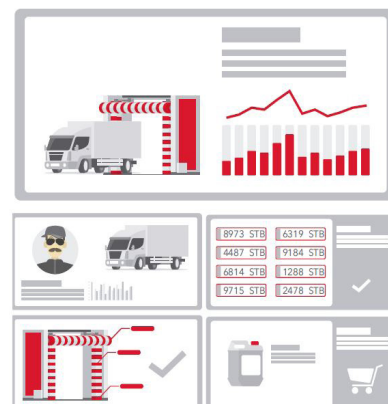
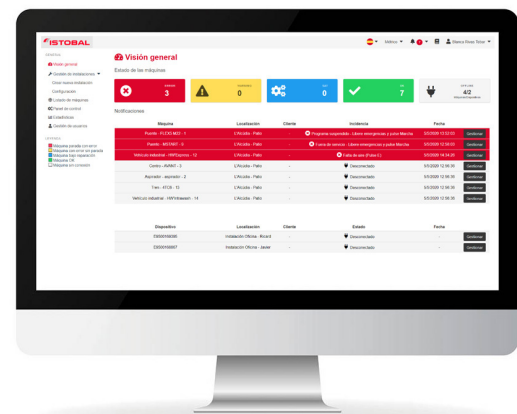
Control panel



Outdoor control station for wall, pole or pedestal installation with colour touchscreen for easy and intuitive navigation through the machine menu. Selectors for activation or deactivation of the vertical and horizontal brushes, buttons for manual movement of the machine and of the brushes and programme selection push buttons are available.

Smartwash by ISTOBAL

This machine can be connected with Smartwash Fleets, a digital platform that turns fleet wash management into a fully connected, autonomous, controlled and monitored system. This system allows you to assign frequencies and wash programmes, create reports and alerts, optimising the time and cost of each wash. Together with Smartwash Manager, it provides information on machine status, electricity and water consumption as well as chemical levels, enabling more efficient remote maintenance to ensure maximum operational availability of the installation.



ISTOBAL HW'COMPAK

High pressure

UNDERCHASSIS WASH

High-pressure system for underchassis washing at 70 bar and 126 L/min, which automates the complex manual washing of the vehicle chassis. Input photocells are available for automatic operation and 10 high-impact nozzles. It can be supplied with the same high pressure pump rack as the optional high pressure side of the rollover by means of a connection solenoid valve.



HIGH PRESSURE LOWER SIDE

The perfect option to complement the brush wash, it consists of two side pipes at the front of the brushes which remove much of the dirt before the brushes come into contact with the vehicle. It works with the 70bar 84 L/min or 126 L/min high-pressure rack, and its nozzle arrangement is designed to make a powerful impact on the underside of the vehicle, where the brushes have the most difficulty washing.

Foaming chemical spray








Automatic application of chemical pre-wash saves time and controls consumption per wash. Its foamy application ensures higher chemical efficiency due to longer reaction time on the vehicle surface. This option includes stainless steel pipes and foams for mixing with air, an automaton controlled dosing pump and chemically resistant 160 bar 21 L/min high-pressure pump.

Consumption

HW'COMPAK PROGRAMME TRAILER (18m) COMPLETE

£3/wash

Wash runs	Tasks	Estimated time (min:sec)	Water consumption 1 (L)	Water consumption 2 (L)	kWh	Shampoo (mL)	Wax (mL)	Prewash (mL)
Drive through	 Underchassis wash	01:00	126	-	0.28	-	-	-
Wash run 1	 Foamy side chemical spray	01:30	-	29	0.16	-	-	800
Wash run 2	 Free	01:00	-	-	0.01	-	-	-
Wash run 3	 Brushes + shampoo + / lower side high-pressure	05:40	650	-	2.02	80	-	-
Wash run 4	 Brushes + rinse	03:40	-	140	0.56	-	60	-
Total		12:50	776	169	3.02	80	60	800



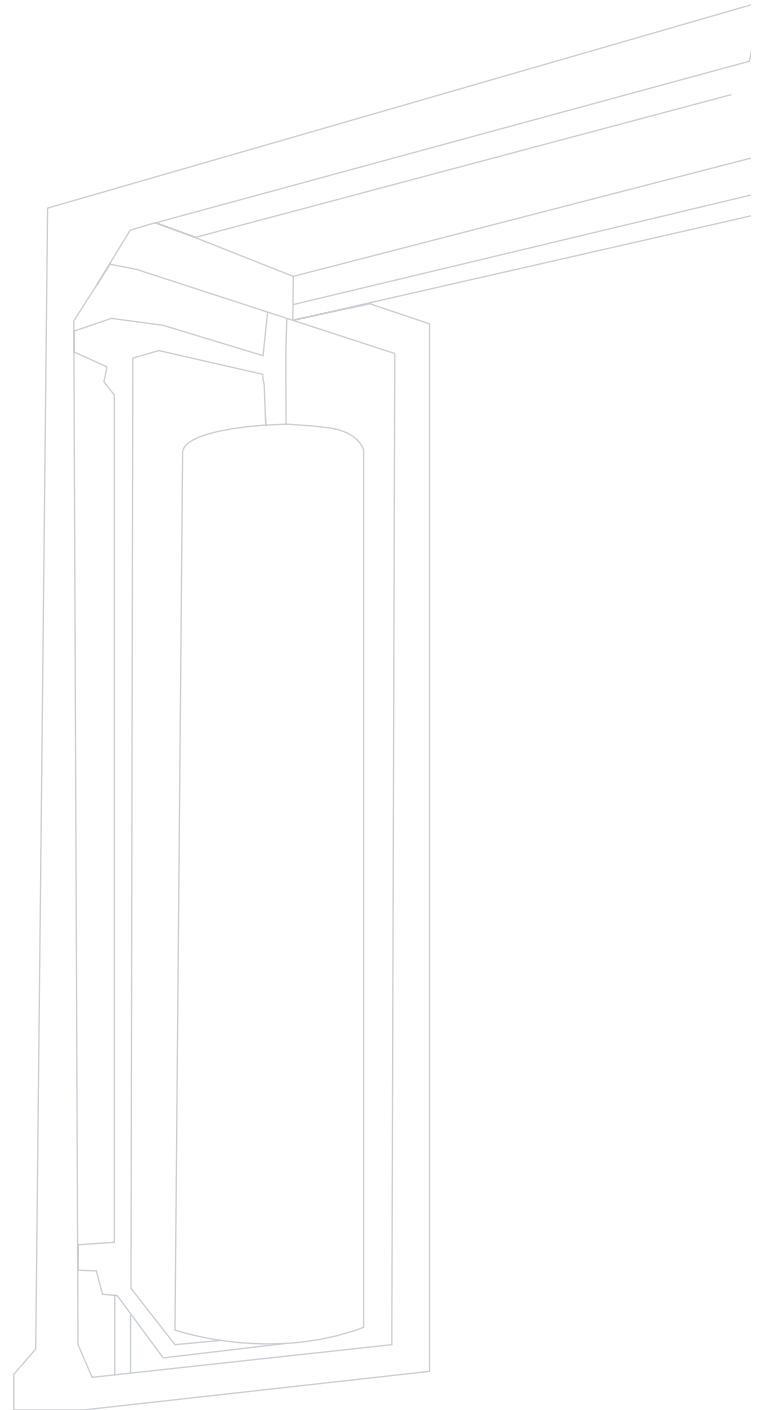
Good Sight Vehicle Wash Equipment

(02) 9757 4700

sales@goodsight.com.au

heavyvehiclewashequipment.com.au

V.12/2020 6CHCKB10



The images, videos and information that appear in this space are merely illustrative and not binding, optional or not available according to the model, and do not constitute an offer. You can contact the commercial department of ISTOBAL for any additional information or request for offer of our products.